



1 Halford Cottage
Halford, Craven Arms, Shropshire, SY



A beautiful modernised stone cottage occupying an idyllic location with spacious gardens, boasting a combination of modern and character features.

Craven Arms 0.7 of a mile, Ludlow 8 miles, Much Wenlock 17 miles, Bridgnorth 20 miles, Shrewsbury 22 miles

Entrance hall | Large open plan kitchen/dining room | Sitting room | Utility room | Cloakroom | Principal bedroom with en-suite shower room | Two further double bedrooms | Family bathroom
Gardens | Terrace | Parking | Views | EPC: C

The Property

1 Halford Cottage is a wonderful property that has recently been newly and sympathetically renovated by the vendors to create a beautiful stone cottage with a light and modern feel yet retains many original character features throughout. The cottage occupies a glorious position situated in the rural hamlet of Halford, just under a mile from the market town of Craven Arms. The property offers idyllic peaceful, rural living and some beautiful views.

Upon entering the property, you are welcomed to a spacious entrance hall way that is particularly light and airy. The open plan kitchen/dining room is an exceptional room boasting wonderful proportions and could be used for a wide range of possibilities. The kitchen is fully fitted with modern integrated units and appliances including a Kenwood range cooker with an ceramic hob, a fridge/freezer and a dishwasher. The cooker sits in a tiled inglenook with a beautiful exposed beam

above and there is a further exposed beam in the room. The room has beautiful bi-fold doors leading on to the terrace area, ideal for seasonal al-fresco dining and entertaining. There is a utility room adjacent providing further units and a basin, there is a separate WC cloakroom. The sitting room offers a beautiful inglenook stone fireplace housing a wood burning stove with further exposed beams.

On the first floor, the principal bedroom is a superb room boasting great proportions with a Juliet balcony and french doors to enjoy the glorious countryside beyond. There are two integrated wardrobes. The principal bedroom benefits from a modern en-suite shower room with a walk-in rain fall shower. There are two further spacious double bedrooms. A modern family bathroom services the first floor.

Outside

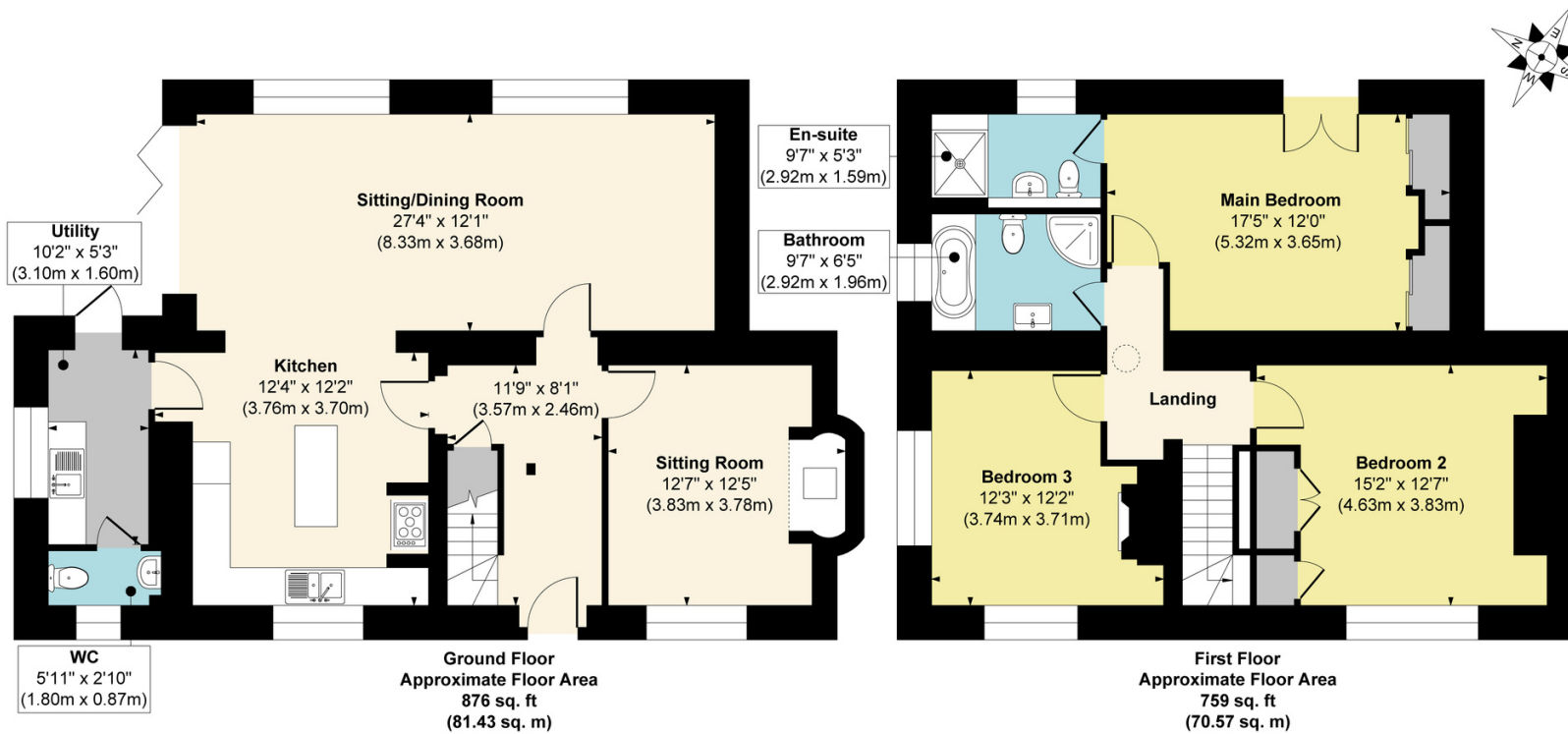
The property benefits from a large spacious garden that extends to around 0.3 of an acre. The garden is mainly laid to lawn and has been recently seeded at the rear. There is a superb terrace area. The property benefits from ample parking and a private drive way.

Situation

The property sits in the rural hamlet of Halford, just under a mile from the market town of Craven Arms. The town offers all of the day-to-day amenities required including supermarkets, cafes, pubs and more. For a wider range of facilities, Ludlow, Much Wenlock, Bridgnorth and Shrewsbury are all within easy reach. There is a train station in Craven Arms and the A49 is within a good distance connecting to the wider network.



1 Halford Cottage, Craven Arms, Shropshire, SY7 9JG



Directions: From Craven Arms, turn right on the B4368 and continue for about half a mile and turn left signposted for Halford. Continue along this lane until you reach Halford Cottage at the end.

What3words: ///rebounder.stitching.funky

Local Authority: Shropshire Council.

Services: Mains water and electricity. Private drainage. Air source heat pump.

Council Tax: Band C

Wayleaves, easements and rights of way: The property will be sold subject to and with the benefits of all wayleaves, easements and rights of way, whether mentioned in these sales particulars or not.

Approx. Gross Internal Floor Area
Main House = 1635 sq. ft / 152.00 sq. m

FOR ILLUSTRATIVE PURPOSES ONLY. MEASUREMENTS ARE APPROXIMATE - NOT TO SCALE
The position & size of doors, windows, appliances and other features are approximate only.
©William Benton-Fife Photographer. Unauthorised reproduction prohibited.



50 Bull Ring, Ludlow, SY8 1AB
01584 817977
ludlow@markwiggins.co.uk
www.markwiggins.co.uk

Fixtures and fittings: A list of the fitted carpets, curtains, light fittings and other items fixed to the property which are included in the sale (or may be available by separate negotiation) will be provided by the Seller's Solicitors. These particulars do not form part of any offer or contract and must not be relied upon as statements or representations of fact. You should not rely on statements by Mark Wiggin Estate Agents in the particulars or by word of mouth or in writing ("information") as being factually accurate about the property, its condition or its value. Mark Wiggin Estate Agents does not have authority to make any representations about the property, and accordingly any information given is entirely without responsibility on the part of the agents, seller(s) or lessor(s). Areas, measurements and distances given are approximate only. The text, photographs and plans are for guidance only and are not necessarily comprehensive. Any reference to alterations to, or use of, any part of the property does not mean that any necessary planning, building regulations or other consent has been obtained. Particulars dated July 2023. Photographs dated July 2023. Mark Wiggin Estate Agents is a trading name of WONO Limited registered in England and Wales, company number 1311393. Registered office: Downton Hall, Ludlow, Shropshire, SY8 3DX